

# TRIBUNALE DI MILANO

## SEZIONE CIVILE III – UFFICIO ESECUZIONI IMMOBILIARI

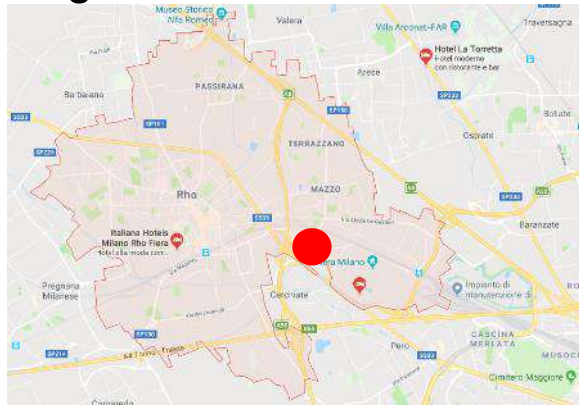
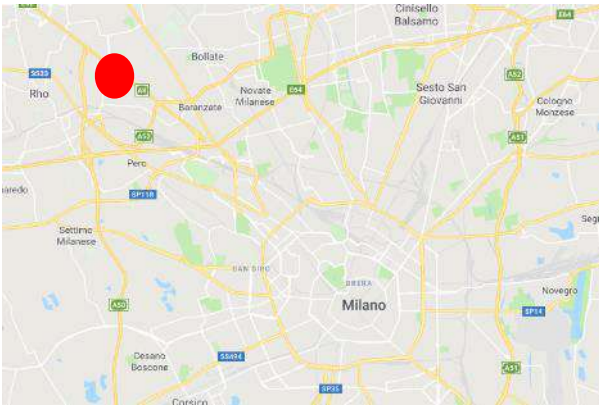
Esecuzione Forzata  
N. 2113/2016

### ALLEGATO C9

### Lotto 9

Appartamento/posto auto  
mapp 44 sub 715 / mapp 240 sub 710

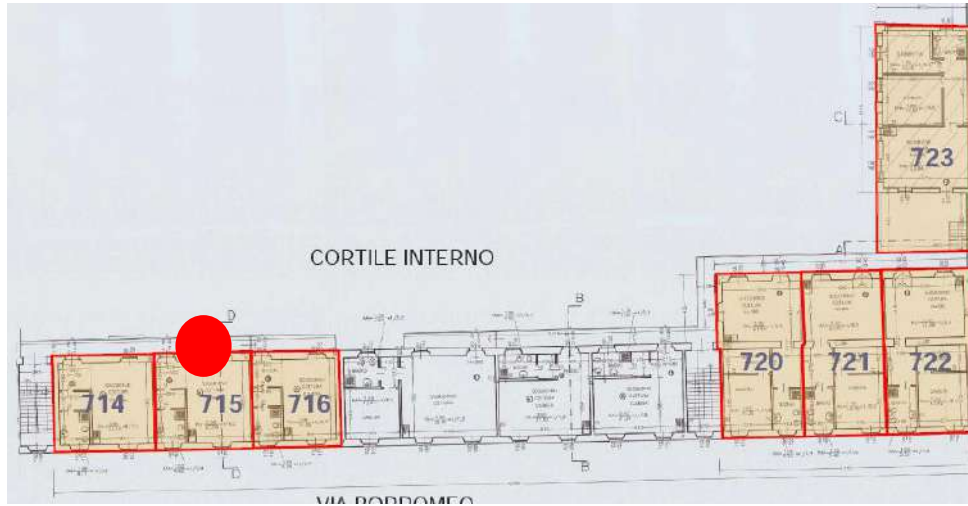
#### Rilievo fotografico



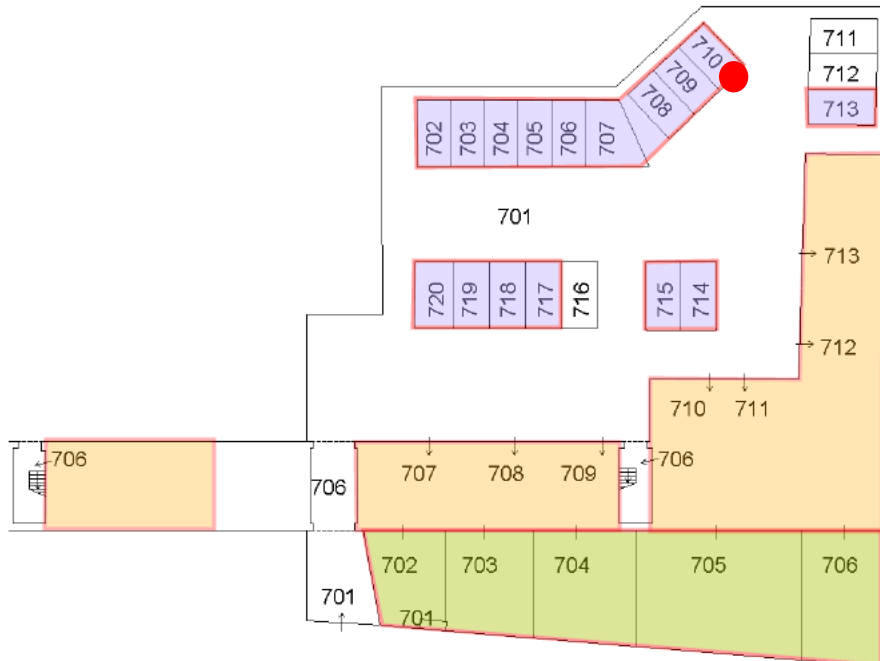
### Lotti da 001 a 016 compresi PLANIMETRIA PIANO TERRA- APPARTAMENTI



PLANIMETRIA PIANO PRIMO - APPARTAMENTI



PLANIMETRIA PIANO TERRA - POSTI AUTO SCOPERTI





**LOTTO N° 009**  
**MAPP 44 SUB 715 / MAPP 240 SUB 710**





