

# TRIBUNALE DI MILANO

## SEZIONE CIVILE III – UFFICIO ESECUZIONI IMMOBILIARI

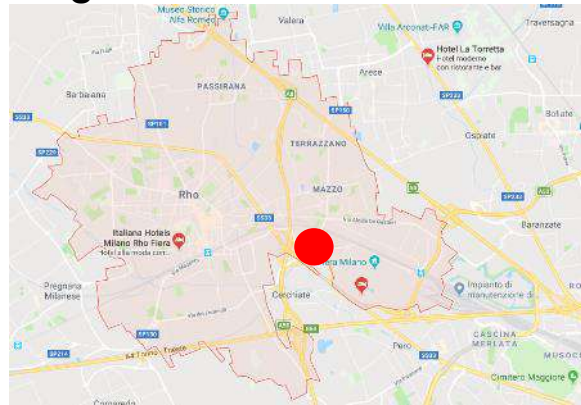
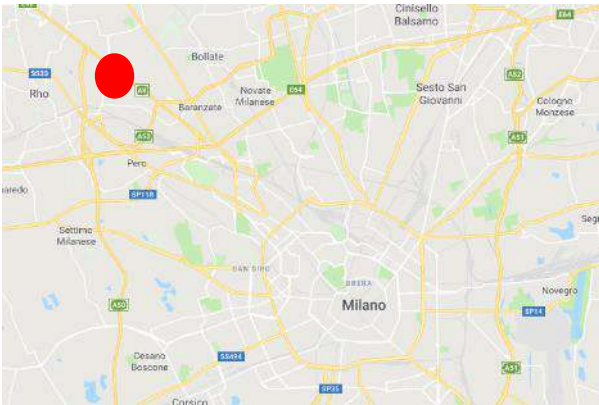
Esecuzione Forzata  
N. 2113/2016

# ALLEGATO C1

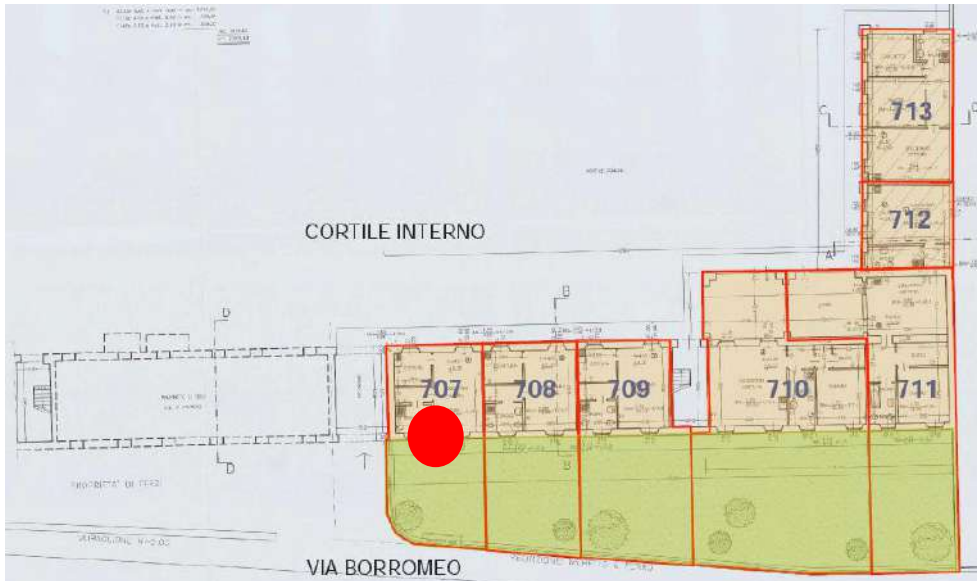
## Lotto 1

Appartamento/posto auto  
mapp 44 sub 707 / mapp 240 sub 702

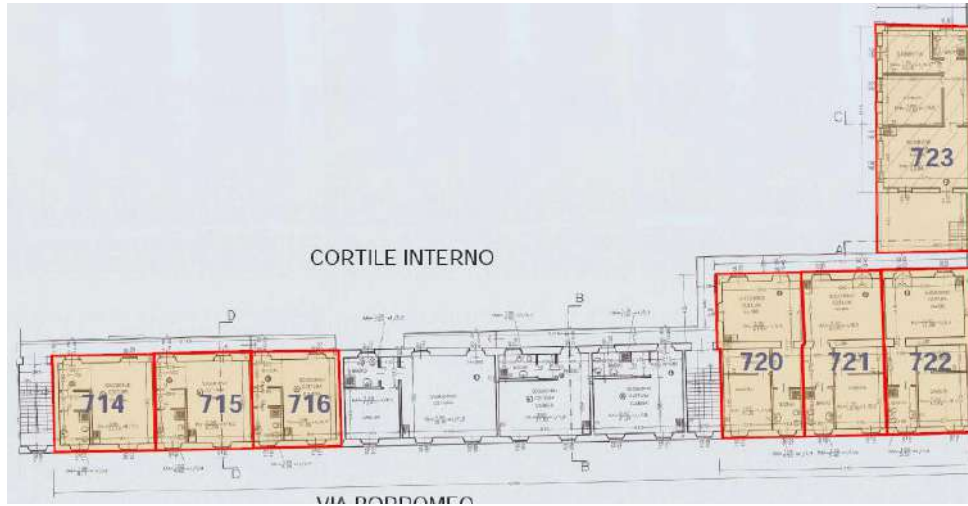
### Rilievo fotografico



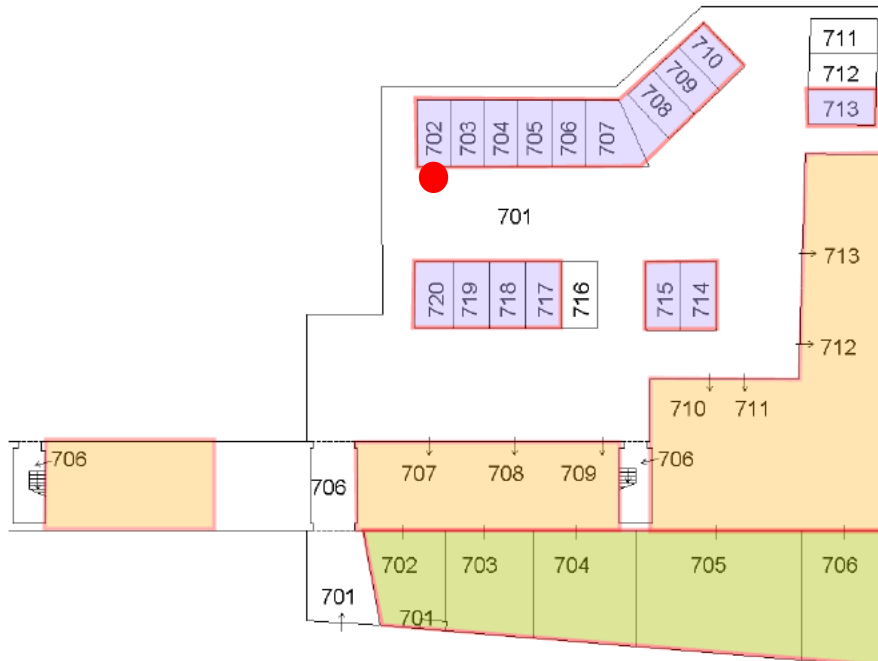
### Lotti da 001 a 016 compresi PLANIMETRIA PIANO TERRA- APPARTAMENTI



PLANIMETRIA PIANO PRIMO - APPARTAMENTI



PLANIMETRIA PIANO TERRA - POSTI AUTO SCOPERTI









**LOTTO N° 001**  
**MAPP 44 SUB 707 graffato a MAPP 43 SUB 702 / MAPP 240 SUB 702**













