

## LOCALE ADIBITO A BAR TAVERNA ANEMA E CORE IN CAPRI (NA) – VIA SELLA ORTA

Esterni fabbricato

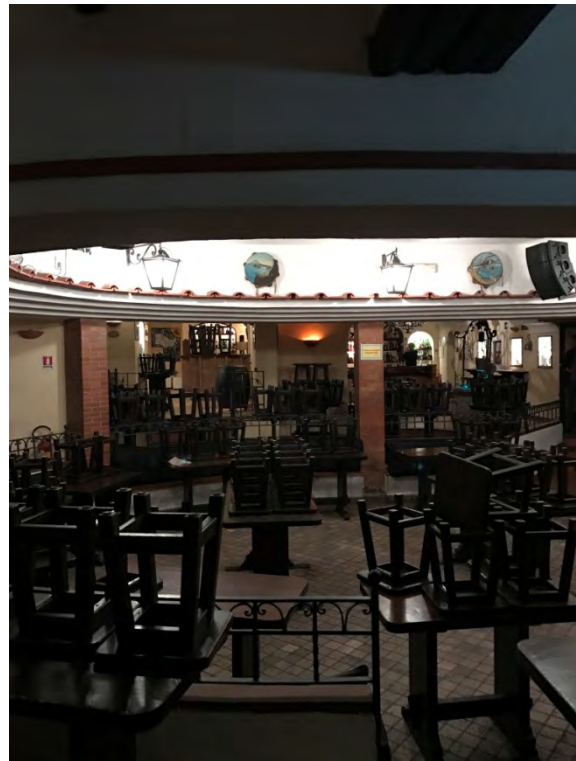








ing. Pasquale Vetrano



via Michele Kerbaker, 55 80129 Napoli - tel. 081 19565570 fax 081 0097898  
C.F. VTR PQL 64P06 F839Y P. IVA 04704321217  
www.essepivi.it progetti@essepivi.it







ing. Pasquale Vetrano



via Michele Kerbaker, 55 80129 Napoli - tel. 081 19565570 fax 081 0097898  
C.F. VTR PQL 64P06 F839Y P. IVA 04704321217  
www.essepivi.it progetti@essepivi.it





ing. Pasquale Vetrano



## HOTEL LA PALMA CAPRI (NA) CORSO VITTORIO EMANUELE 37/39



via Michele Kerbaker, 55 80129 Napoli - tel. 081 19565570 fax 081 0097898  
C.F. VTR PQL 64P06 F839Y P. IVA 04704321217  
www.essepivi.it progetti@essepivi.it





ing. Pasquale Vetrano



via Michele Kerbaker, 55 80129 Napoli - tel. 081 19565570 fax 081 0097898  
C.F. VTR PQL 64P06 F839Y P. IVA 04704321217  
www.essepivi.it progetti@essepivi.it





ing. Pasquale Vetrano

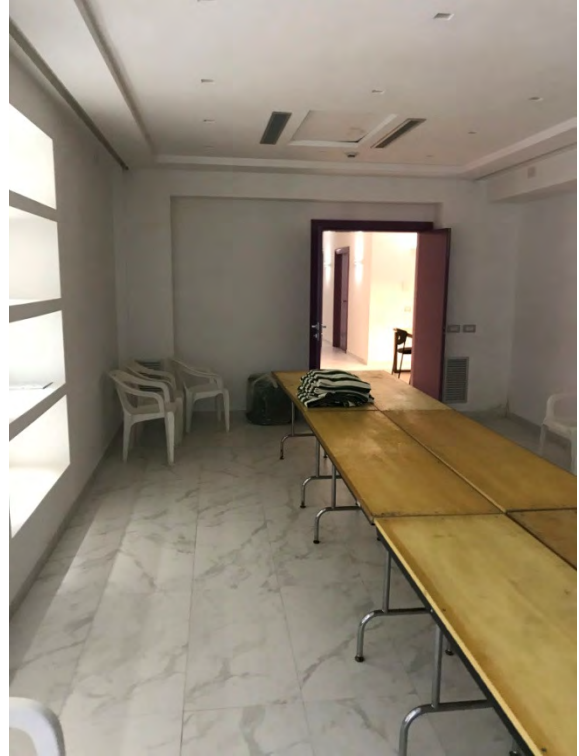


via Michele Kerbaker, 55 80129 Napoli - tel. 081 19565570 fax 081 0097898  
C.F. VTR PQL 64P06 F839Y P. IVA 04704321217  
www.essepivi.it progetti@essepivi.it





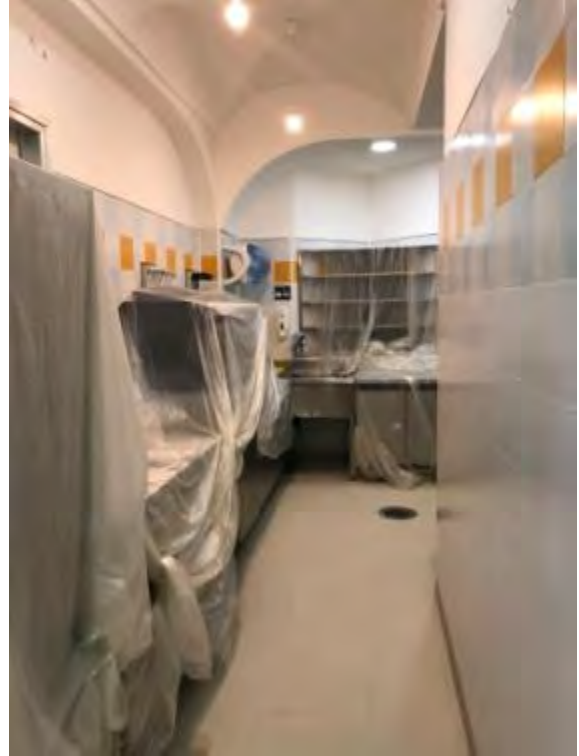
ing. Pasquale Vetrano









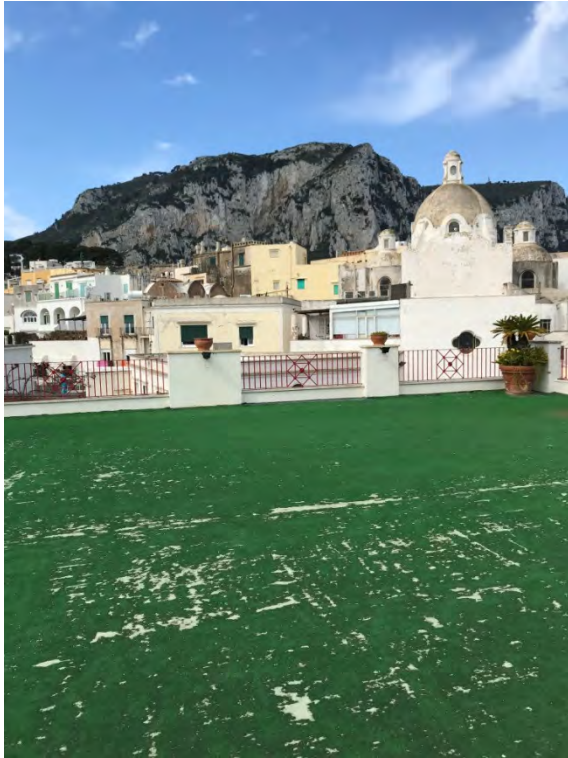








ing. Pasquale Vetrano







ing. Pasquale Vetrano

